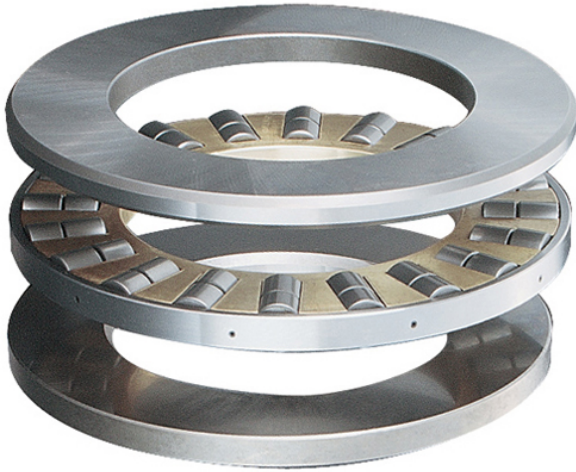




Spherco BEARING LTD

6.8270 in x 12.7500 in x 2.5000 in Rollway
CT49A Cylindrical Roller Thrust Bearings



Bearing No. CT49A

d	6.8270 in
static load capacity:	1004880 lbs
D	12.7500 in
cage material:	Machine Brass
B	2.5000 in
series:	CT
bearing material:	Case Carburized Steel

CT49A Bearing 2D drawings and 3D CAD models